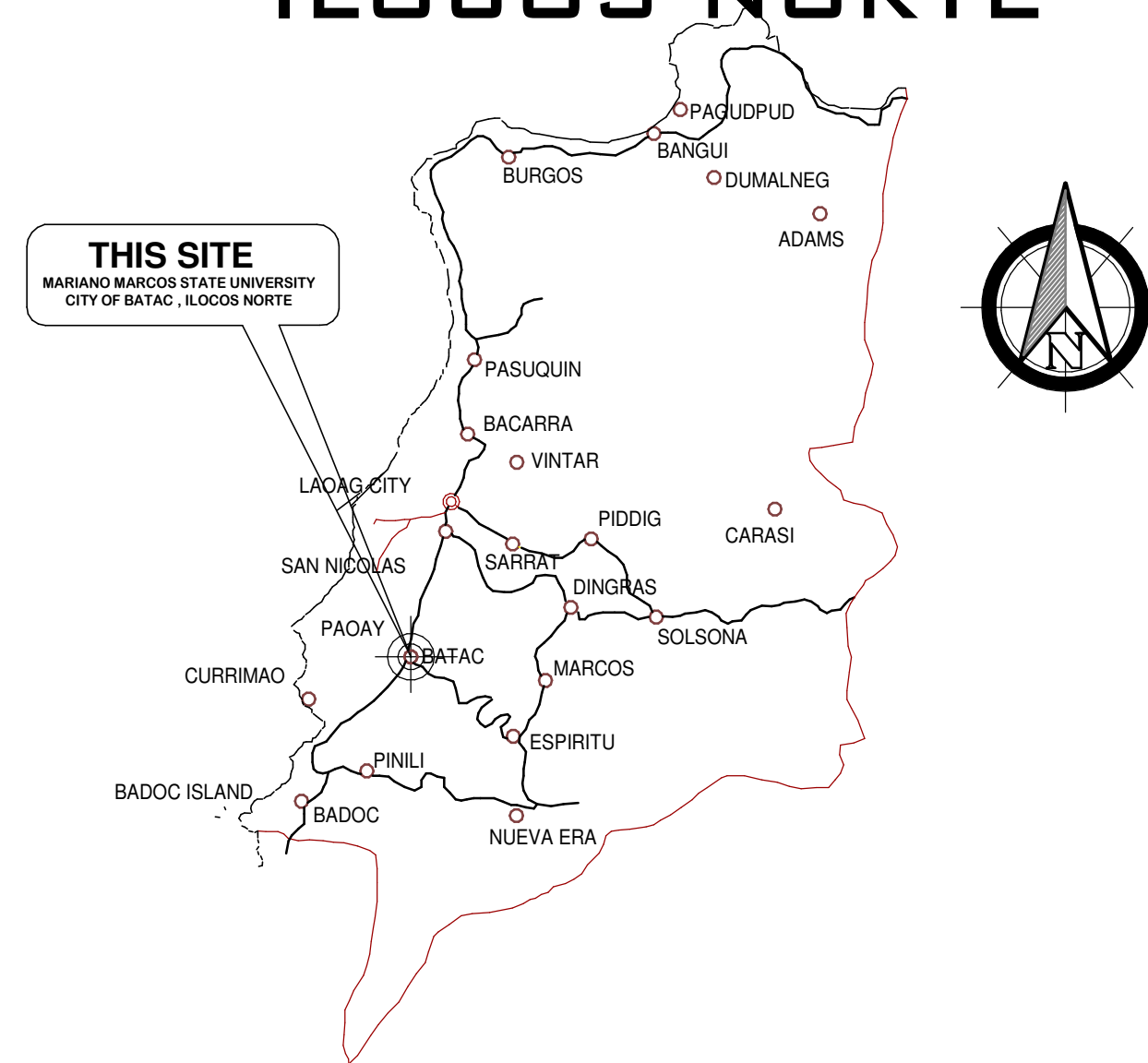


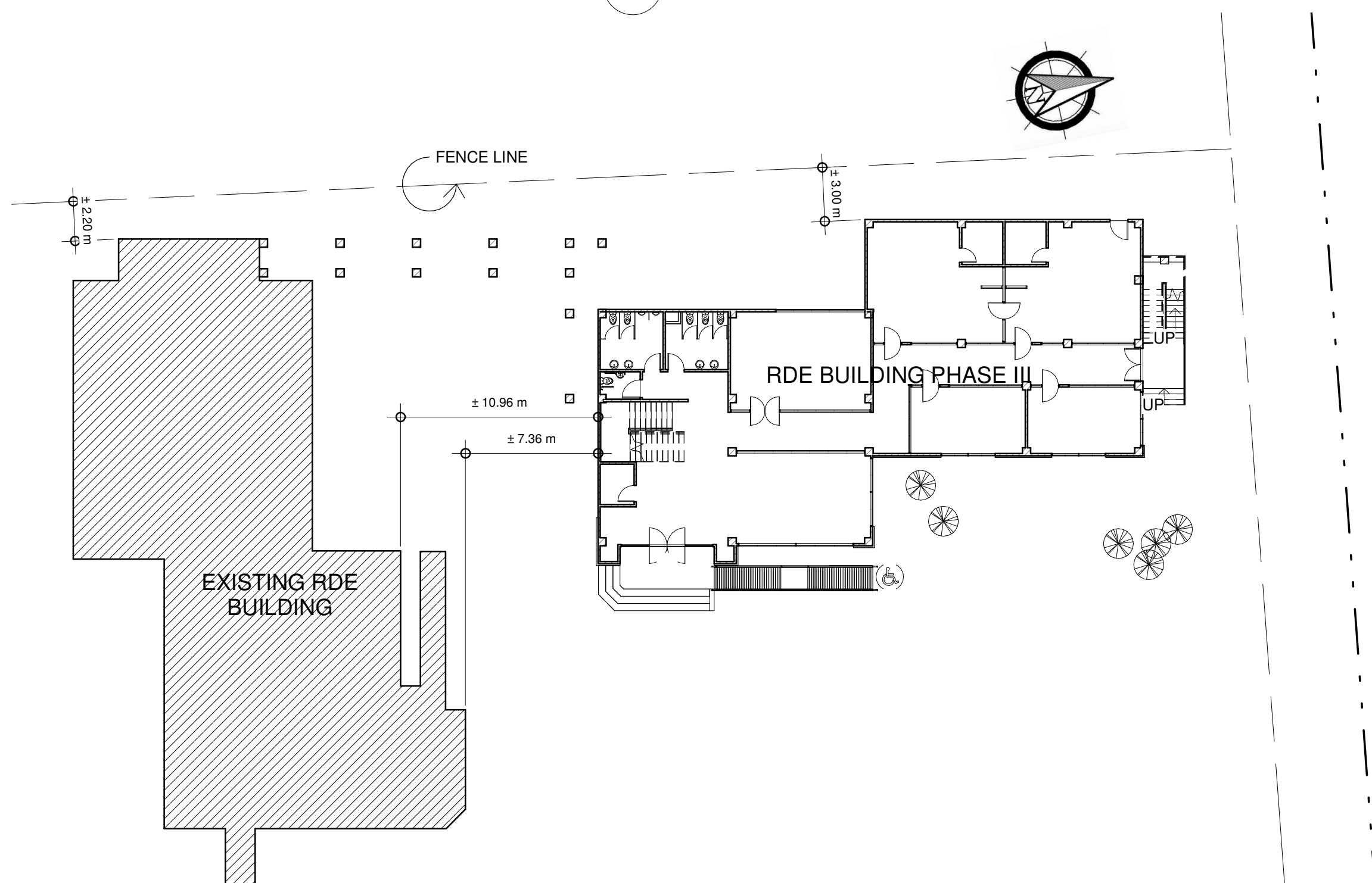


1 PERSPECTIVE

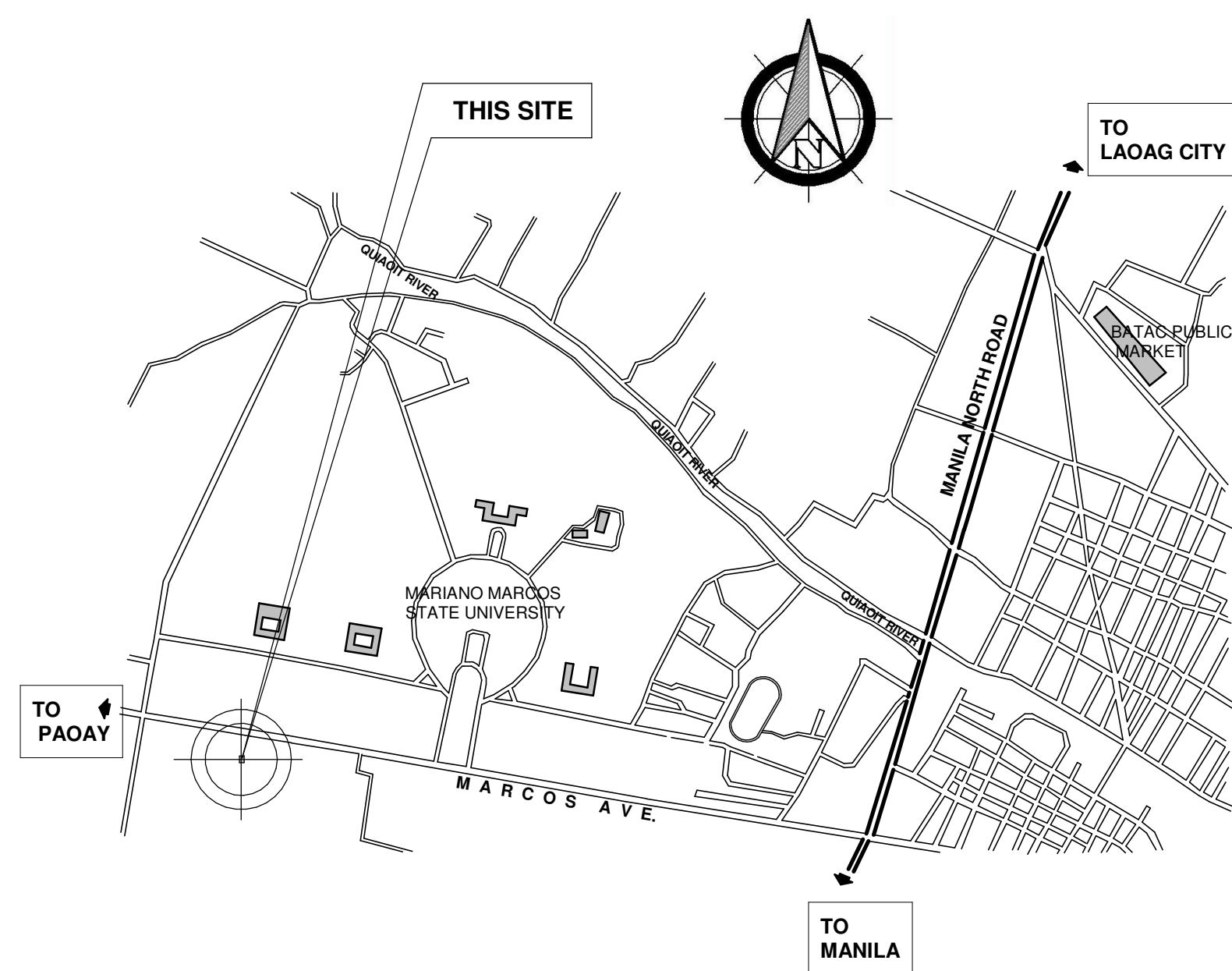
# MAP OF ILOCOS NORTE



3 LOCATION MAP



2 SITE DEVELOPEMENT PLAN  
1 : 250 meters



4 VICINITY MAP

TABLE OF CONTENTS		REPUBLIC OF THE PHILIPPINES Department of Public Works and Highways Office of the Building Official
ARCHITECTURAL PLANS		CITY OF BATAC, ILOCOS NORTE
A-1	PERSPECTIVE VIEW SITE DEVELOPMENT PLAN VICINITY MAP	BUILDING OFFICIAL
A-2	TABLE OF CONTENTS	
A-3	GROUND FLOOR PLAN	
A-4	SECOND FLOOR PLAN	
A-5	ROOF DECK PLAN	
A-6	FRONT ELEVATION	
A-7	RIGHT-SIDE ELEVATION	
A-8	LEFT-SIDE ELEVATION	
A-9	REAR ELEVATION	
A-10	CROSS SECTION	
A-11	SCHEDULE OF FLOOR AND WALL FINISHES	
A-12	LONGITUDINAL SECTION	
A-13	TYPICAL BRICK CLADDING DETAIL	
A-14	TYPICAL CEILING SECTION	
A-15	GROUND FLOOR REFLECTED CEILING PLAN	
A-16	SECOND FLOOR REFLECTED CEILING PLAN	
A-17	SCHEDULE OF DOORS AND WINDOWS	
A-18	SCHEDULE OF FIXED GLASS	
A-19	SCHEDULE OF FIXED GLASS	
A-20	GROUND FLOOR COMFORT ROOM PLAN	
A-21	SECOND FLOOR COMFORT ROOM PLAN	
A-22	LONGITUDINAL SECTION THRU COMFORT ROOM	
A-23	SECTION THRU FEMALE COMFORT ROOM	
A-24	SECTION THRU MALE COMFORT ROOM	
A-25	RAMP PLAN (GROUND FLOOR)	
A-26	ELEVATION OF RAMP	
A-27	TYPICAL SECTION OF RAMP FLOORING (R-1)	
A-28	SECTION THRU ENTRANCE STEPS	
A-29	BUILDING NAME DETAIL	
A-30	DOG HOUSE DETAIL	
A-31	STAIR PLAN	
A-32	SECTION THRU STAIR	
A-33	STAIR NOSING DETAIL	
A-34	SECTION OF FIRE EXIT STAIR	
A-35	FIRE EXIT STAIR PLAN	
A-36	LABORATORY COUNTERTOP PLAN	
A-37	SECTION THRU LABORATORY I	
A-38	SECTION THRU LABORATORY II	
A-39	SECTION THRU LABORATORY III	
STRUCTURAL PLANS		LINE AND GRADE
S-1	STRUCTURAL NOTES	
S-2	STRUCTURAL NOTES	
S-3	STRUCTURAL NOTES	
S-4	FOUNDATION PLAN	
S-5	SECOND FLOOR FRAMING PLAN	
S-6	ROOF DECK FRAMING PLAN	
S-7	COLUMN FOOTING DETAIL	
S-8	WALL FOOTING DETAIL	
S-9	TYPICAL SECTION OF BEAM	
S-10	TYPICAL BEAM ELEVATION	
S-11	SCHEDULE OF BEAM	
S-12	TYPICAL DETAIL OF SLAB-ON-FILL	
S-13	SCHEDULE OF SLAB	
S-14	LINTEL BEAM TOP OF PARAPET	
S-15	CANTILEVER BEAM DETAIL	
S-16	SECTION OF SLAB / STAIR SECTION DETAIL	
S-17	STAIR FOOTING DETAIL	
S-18	SPOT DETAIL OF RAMP FLOORING	
S-19	RAMP SECTION	
S-20	POWERHOUSE DETAILS	
S-21	POWERHOUSE DETAILS	
ELECTRICAL PLANS		ARCHITECTURAL
E-1	GROUND FLOOR LIGHTING LAYOUT PLAN	
E-2	SECOND FLOOR LIGHTING LAYOUT PLAN	
E-3	GROUND FLOOR CONVENIENCE LAYOUT PLAN	
E-4	SECOND FLOOR CONVENIENCE LAYOUT PLAN	
E-5	GROUND FLOOR EF, EL & EXIT SIGNAGE LAYOUT PLAN	
E-6	SECOND FLOOR EF, EL & EXIT SIGNAGE LAYOUT PLAN	
E-7	GROUND FLOOR ACU OUTLET LAYOUT PLAN	
E-8	SECOND FLOOR ACU OUTLET LAYOUT PLAN	
E-9	ROOF DECK PANEL BOARD PLAN	
E-10	SCHEDULE OF LOADS	
E-11	SCHEDULE OF LOADS	
E-12	SCHEDULE OF LOADS	
E-13	SINGLE LINE DIAGRAM	
E-14	SINGLE LINE DIAGRAM	
E-15	LEGEND / SYMBOLS	
E-16	ECB / MTS MAIN SINGLE LINE DIAGRAM	
E-17	GENERAL NOTES	
E-18	ELECTRICAL RISER DIAGRAM	
E-19	LOCATION MAP	
MECHANICAL PLANS		STRUCTURAL
M-1	PERSPECTIVE VIEW	
M-2	LOCATION MAP	
M-3	SCHEDULE OF EQUIPMENT	
M-4	GENERAL NOTES	
M-5	SYSTEM DIAGRAM	
M-6	GROUND FLOOR ACU LAYOUT PLAN	
M-7	SECOND FLOOR ACU LAYOUT PLAN	
M-8	GROUND FLOOR ACU WALL PENETRATION PLAN	
M-9	SECOND FLOOR ACU WALL PENETRATION PLAN	
M-10	ROOF DECK OUTDOOR UNIT PLAN	
M-11	GROUND FLOOR EXHAUST FAN LAYOUT PLAN	
M-12	SECOND FLOOR EXHAUST FAN LAYOUT PLAN	
M-13	GROUND FLOOR EXHAUST FAN WALL PENETRATION PLAN	
M-14	SECOND FLOOR EXHAUST FAN WALL PENETRATION PLAN	
M-15	SECTION DETAIL	
M-16	DOG HOUSE DETAIL	
M-17	EXHAUST FAN DETAIL	
M-18	CEILING CASSETTE DRAIN LINE DETAIL	
M-19	WALL PENETRATION DETAIL	
M-20	TRAPEZE SUPPORT DETAIL	
M-21	SCHEDULE OF EQUIPMENT	
M-22	GENERAL NOTES	
M-23	FIRE EXTINGUISHER DETAIL	
M-24	GROUND FLOOR FIRE EXTINGUISHER LAYOUT PLAN	
M-25	SECOND FLOOR FIRE EXTINGUISHER LAYOUT PLAN	
M-26	GROUND FLOOR GAS LINE LAYOUT PLAN	
M-27	SECOND FLOOR GAS LINE LAYOUT PLAN	
M-28	GAS LINE DIAGRAM	
M-29	L-TYPE SUPPORT VERTICAL LINE	
M-30	L-TYPE SUPPORT HORIZONTAL LINE ON CEILING	
M-31	CANTILEVER SUPPORT HORIZONTAL & VERTICAL LINE	
PLUMBING PLANS		ELECTRICAL
P-1	GROUND FLOOR SEWERLINE LAYOUT PLAN	
P-2	SECOND FLOOR SEWERLINE LAYOUT PLAN	
P-3	GROUND FLOOR WATERLINE LAYOUT PLAN	
P-4	SECOND FLOOR WATERLINE LAYOUT PLAN	
P-5	DOWNSPOUT LAYOUT PLAN	
P-6	SEWERLINE (ISOMETRIC)	
P-7	WATERLINE (ISOMETRIC)	
P-8	SEPTIC TANK DETAIL	
P-9	PLUMBING NOTES	
P-10	LOCATION MAP	
P-11	PLUMBING SYMBOLS	
P-12	WATER CLOSET AND LAVATORY TYPICAL DETAIL	
ELECTRONIC PLANS		SANITARY
EL-1	PERSPECTIVE VIEW	
EL-2	LOCATION MAP	
EL-3	LEGEND / SYMBOLS	
EL-4	GENERAL NOTES	
EL-5	GROUND FLOOR FDAS LAYOUT PLAN	
EL-6	SECOND FLOOR FDAS LAYOUT PLAN	
EL-7	GROUND FLOOR CCTV LAYOUT PLAN	
EL-8	SECOND FLOOR CCTV LAYOUT PLAN	
EL-9	GROUND FLOOR WIFI & DATA LAYOUT PLAN	
EL-10	SECOND FLOOR WIFI & DATA LAYOUT PLAN	
EL-11	SMOKE DETECTOR MOUNTING DETAILS I	
EL-12	SMOKE DETECTOR MOUNTING DETAILS II	
EL-13	MOUNTED DETAIL OF MANUAL PULL STATION	
EL-14	DETECTOR DETAIL ON DROP CEILING W/ CONDUIT	
EL-15	EXPOSED	
EL-16	MOUNTED DETAIL OF HORN STROBE	
EL-17	CAMERA MOUNTING DETAIL	
EL-18	FDAS RISER DIAGRAM	
		FIRE CODE (R.A. 9514)



FROM THE OFFICE:  
**PHYSICAL PLANNING AND DEVELOPMENT OFFICE**  
2/F 202 ADMINISTRATION BLDG. MARIANO MARCOS STATE UNIVERSITY  
CITY OF BATAC, 2906 ILOCOS NORTE  
TELEFAX: +63 (77)792-3191

DRAWN BY:  
**BJAY A. DAYANG**  
DRAFTSMAN I  
PREPARED BY:  
**PHILIP P. PADRE**  
ENGINEER I

SIGNED & SEALED BY:  
**AIDAY CABANG**  
ARCHITECT  
PRC NO.: 12274  
PTR: 0147662  
PLACE ISSUED: CITY OF BATAC  
DATE: JANUARY 06, 2022  
TIN: 284-723-161

PROJECT TITLE:  
**CONSTRUCTION OF RDE BUILDING PHASE III**  
LOCATION: MMSU CRL-CITY OF BATAC, ILOCOS NORTE

CHECKED/REVIEWED BY:  
**AIDAY CABANG**  
ARCHITECT IV, CHIEF-PHYSICAL PLANNING SECTION  
RECOMMENDING APPROVAL:  
**ROMEO R. DULDULO**  
DIRECTOR, PPDO

CONFORME:  
**BJORN S. SANTOS**  
DIRECTOR, RESEARCH  
APPROVED BY:  
**SHIRLEY C. AGRUPIS**  
UNIVERSITY PRESIDENT

SHEET CONTENTS:  
PERSPECTIVE VIEW  
SITE DEVELOPMENT PLAN  
VICINITY MAP  
TABLE OF CONTENTS  
Drawings and specifications and other contract documents duly signed, stamped or sealed, as instruments of service, are the intellectual property and documents of the architect. Whether the object for which they are made is executed or not, it shall be unlawful for any person to duplicate or to make copies of said documents for use in the repetition of and for other project or building, whether executed party or in whole, without the written consent of architect or author of said document.  
Art. IV-Sec. 338A-266

SHEET NO:  
A-1  
1 16